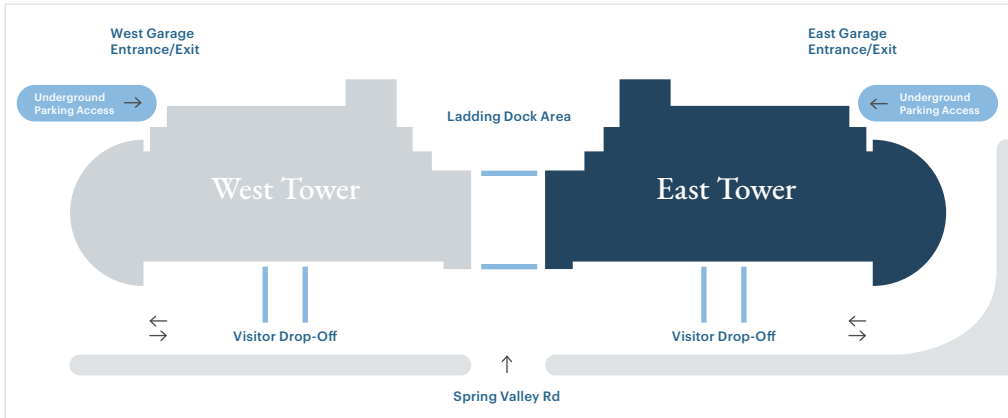


EAST TOWER

Availabilities



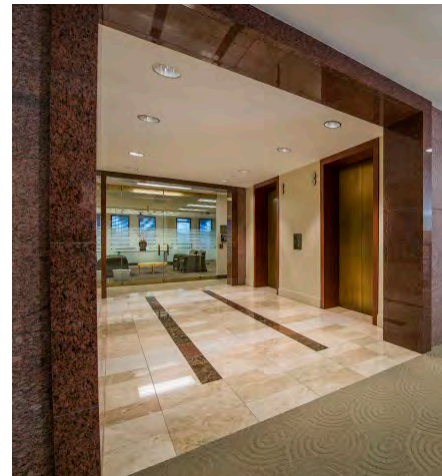
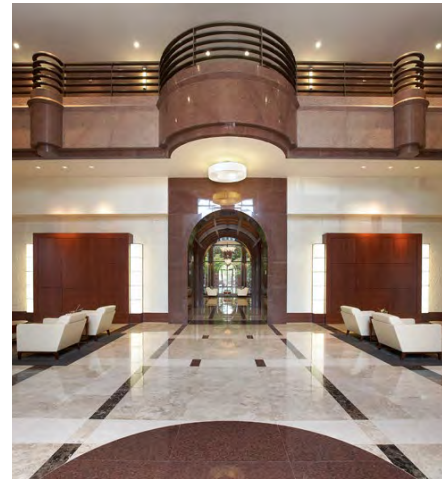
 5001 Spring Valley Road, Dallas TX 75244



Providence Towers is one of the most recognizable buildings in Dallas and the jewel of the Platinum Corridor. It commands the eye with its iconic structure and grand archway. This Class A office property offers upscale business environments and an enviable suite of amenities to satisfy the most discerning of companies.

EAST TOWER VACANCIES

FLOOR	SUITE	SQ FT	RATE
1ST	100	6,196 RSF	\$24.00/RSF NNN + E
1ST	120	5,120 RSF	\$24.00/RSF NNN + E
2ND	200	11,084 RSF - 15,067 RSF	\$24.00/RSF NNN + E
2ND	230	3,983 RSF - 15,067 RSF	\$24.00/RSF NNN + E
2ND	250	2,060 RSF	\$24.00/RSF NNN + E
4TH	400	13,626 RSF	\$27.00/RSF NNN + E
5TH	525	4,523 RSF - 6,284 RSF	\$27.00/RSF NNN + E
5TH	545	1,761 RSF - 10,467 RSF	\$27.00/RSF NNN + E
6TH	625	3,428 RSF	\$27.00/RSF NNN + E (Available 1/1/2021)
10TH	1040	2,694 RSF	\$27.00/RSF NNN + E
11TH	1155	6,601 RSF	\$27.00/RSF NNN + E



FOR LEASING INFORMATION, PLEASE CONTACT:

Kim Brooks
(972) 361-1122
kimbrooks@transwestern.com

Justin Miller
(972) 361-1134
justin.miller@transwestern.com

Scott Walker
(972) 774-2504
scott.walker@transwestern.com

Proudly Leased and Managed by
 TRANSWESTERN®

KBS