

WEST TOWER

Suite 1020W

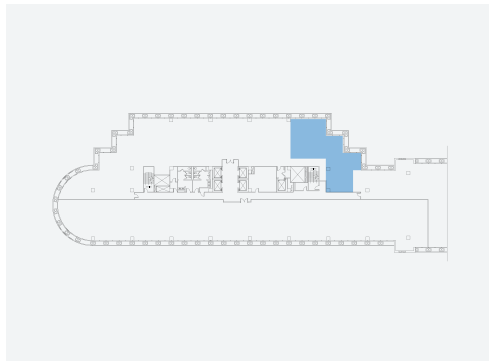
2,134 RSF



PROVIDENCE
TOWERS

a **KBS** property

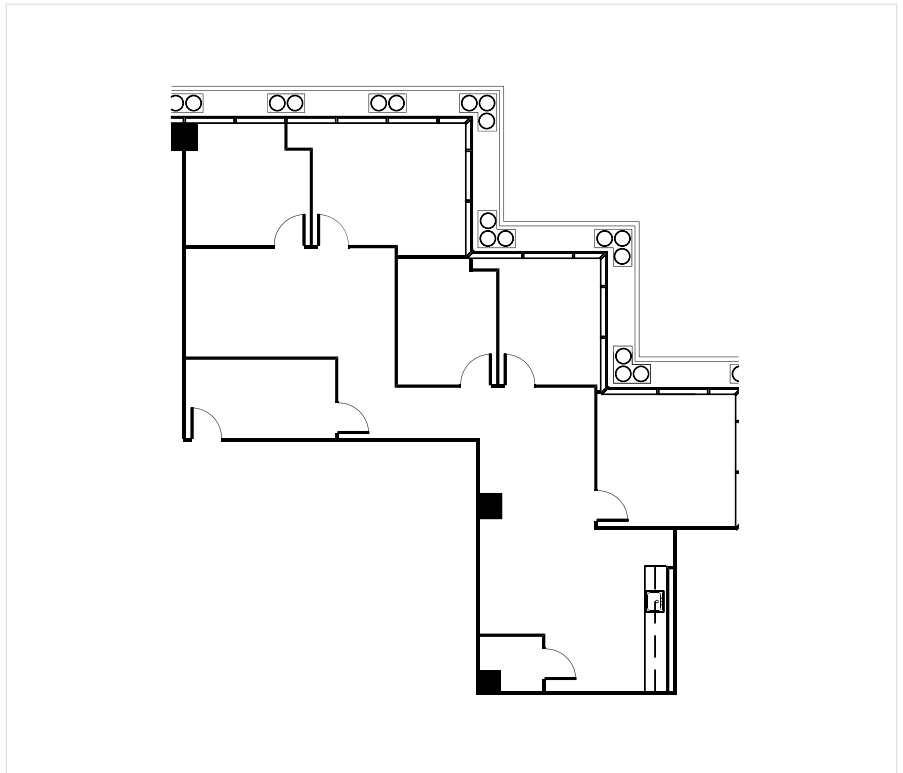
 5001 Spring Valley Road, Dallas TX 75244



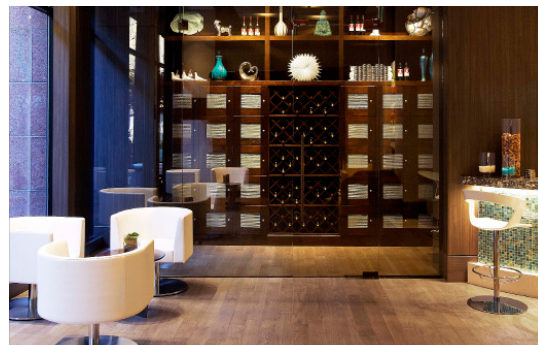
FLOOR **10TH**

SUITE **1020W**

SQ FT **2,134 RSF**



Providence Towers is one of the most recognizable buildings in Dallas and the jewel of the Platinum Corridor. It commands the eye with its iconic structure and grand archway. This Class A office property offers upscale business environments and an enviable suite of amenities to satisfy the most discerning of companies.



FOR LEASING INFORMATION, PLEASE CONTACT:

Kim Brooks
(972) 361-1122
kimbrooks@transwestern.com

Justin Miller
(972) 361-1134
justin.miller@transwestern.com

Scott Walker
(972) 774-2504
scott.walker@transwestern.com

Proudly Leased and Managed by

 **TRANSWESTERN**

KBS